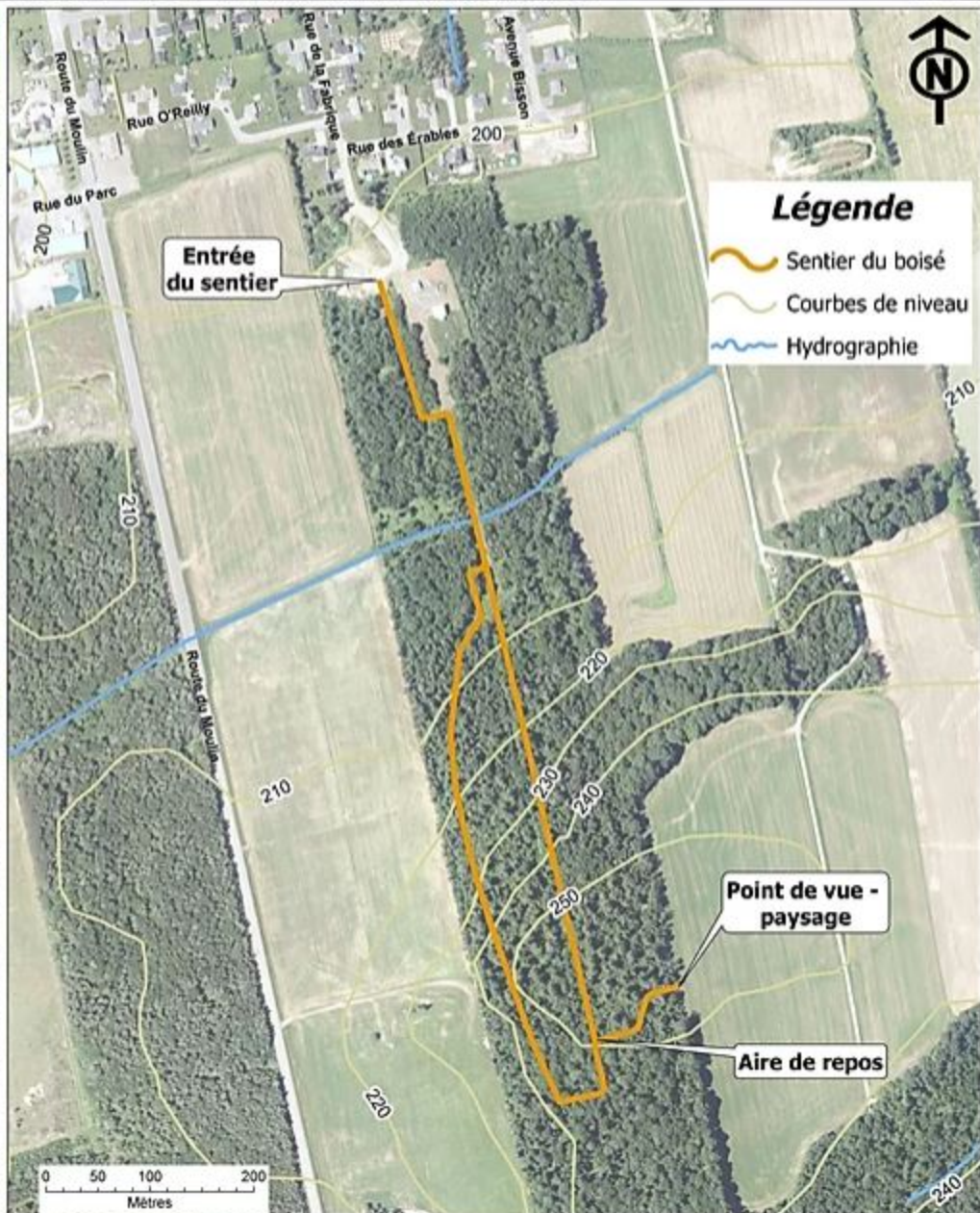


Sentier du boisé




Saint-Patrice-de-Beaurivage

Sentier balisé de 2 km

Informations: 418-596-2362 st.patrice@globetrotter.net



Légende

-  Sentier du boisé
-  Courbes de niveau
-  Hydrographie

Entrée
du sentier

Point de vue -
paysage

Aire de repos

0 50 100 200
Mètres